

APPENDICES

Table of Contents

Appendix A: Maps

<u>Map</u>	<u>Title</u>	<u>Page</u>
1.1	Niska Landholdings _____	1
1.2	Hanlon Creek Subwatershed _____	2
3.1	Physiography _____	3
3.2	Surficial Geology _____	4
3.3	Soils _____	5
3.4	Hydrology _____	6
3.5	Groundwater Recharge _____	7
3.6	Ecological Land Classification _____	8
3.7	Natural Heritage Designations _____	9

Appendix B: List of Plant Species

Appendix C: List of Bird Species

Appendix D: List of Other Wildlife Species

Appendix A: Maps

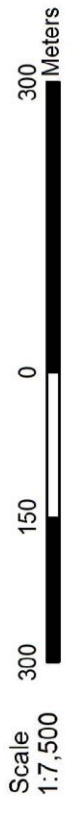
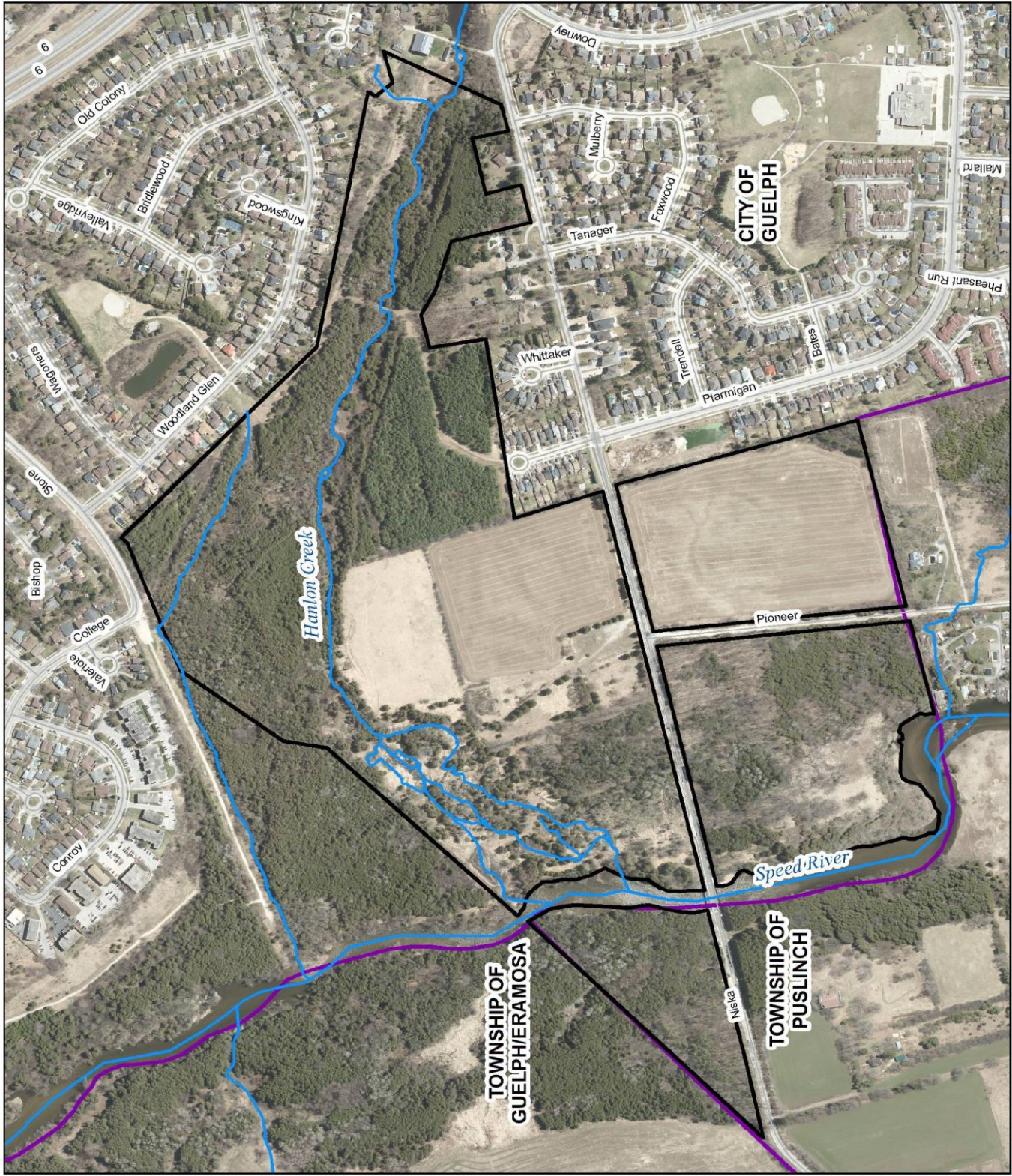
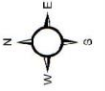
Map 1.1

Niska Land Holdings

Legend

- ROADS
- WATERCOURSE
- NISKA PROPERTY
- MUNICIPAL BOUNDARY

2023 Niska Land Holdings Management Plan



GRCA Disclaimer Statement:
This map is for information purposes only, and the Grand River Conservation Authority takes no responsibility for, nor guarantees, the accuracy of all the information contained within this map.
Copyright, Grand River Conservation Authority 2022. May not be reproduced or altered in any way.

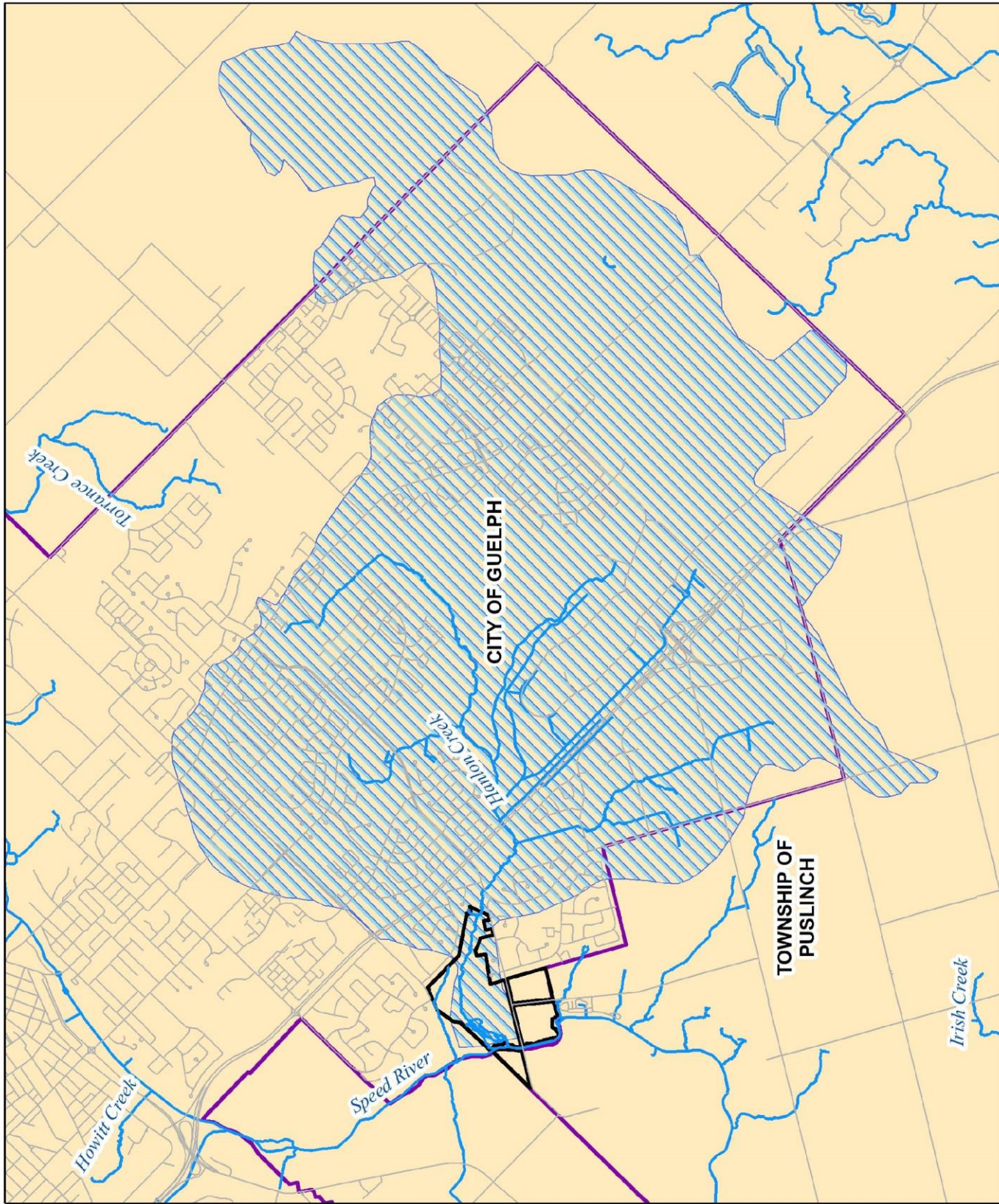
Map 1.2

Hanlon Creek Subwatershed

Legend

- ROADS
- WATERCOURSE
- NISKA PROPERTY
- HC SUBWATERSHED
- MUNICIPAL BOUNDARY

2023 Niska Land Holdings Management Plan



Scale 1:46,000
1.5 0.75 0 1.5 Kilometers

GRCA Disclaimer Statement:
This map is for information purposes only, and the Grand River Conservation Authority takes no responsibility for, nor guarantees, the accuracy of all the information contained within this map.
Copyright, Grand River Conservation Authority 2022. May not be reproduced or altered in any way.

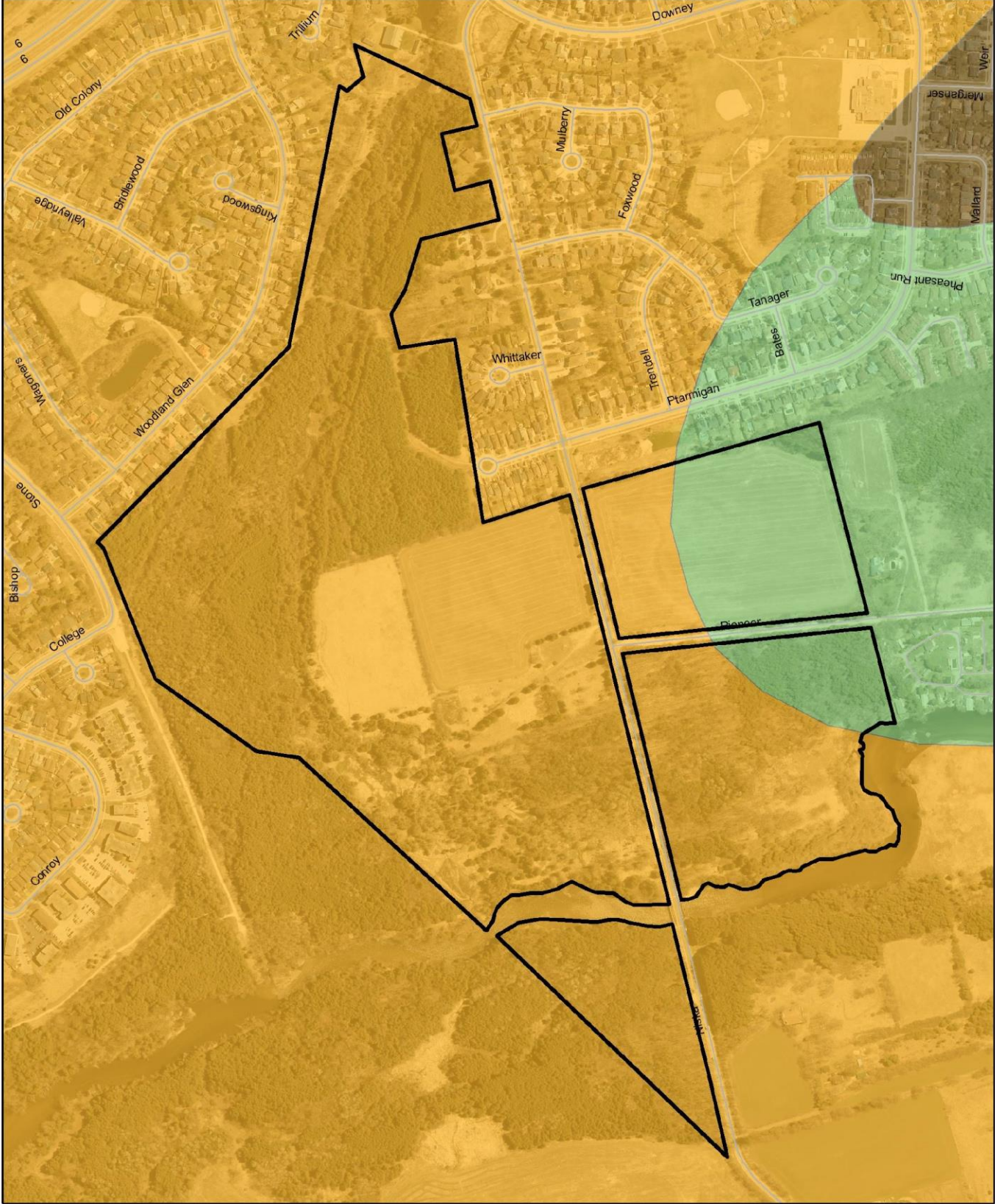
Map 3.1

Physiography

Legend

- ROADS
- NISKA PROPERTY
- PHYSIOGRAPHY
 - Drumlins
 - Spillways
 - Till Plains (Drumlinized)

2023 Niska Land Holdings
Management Plan



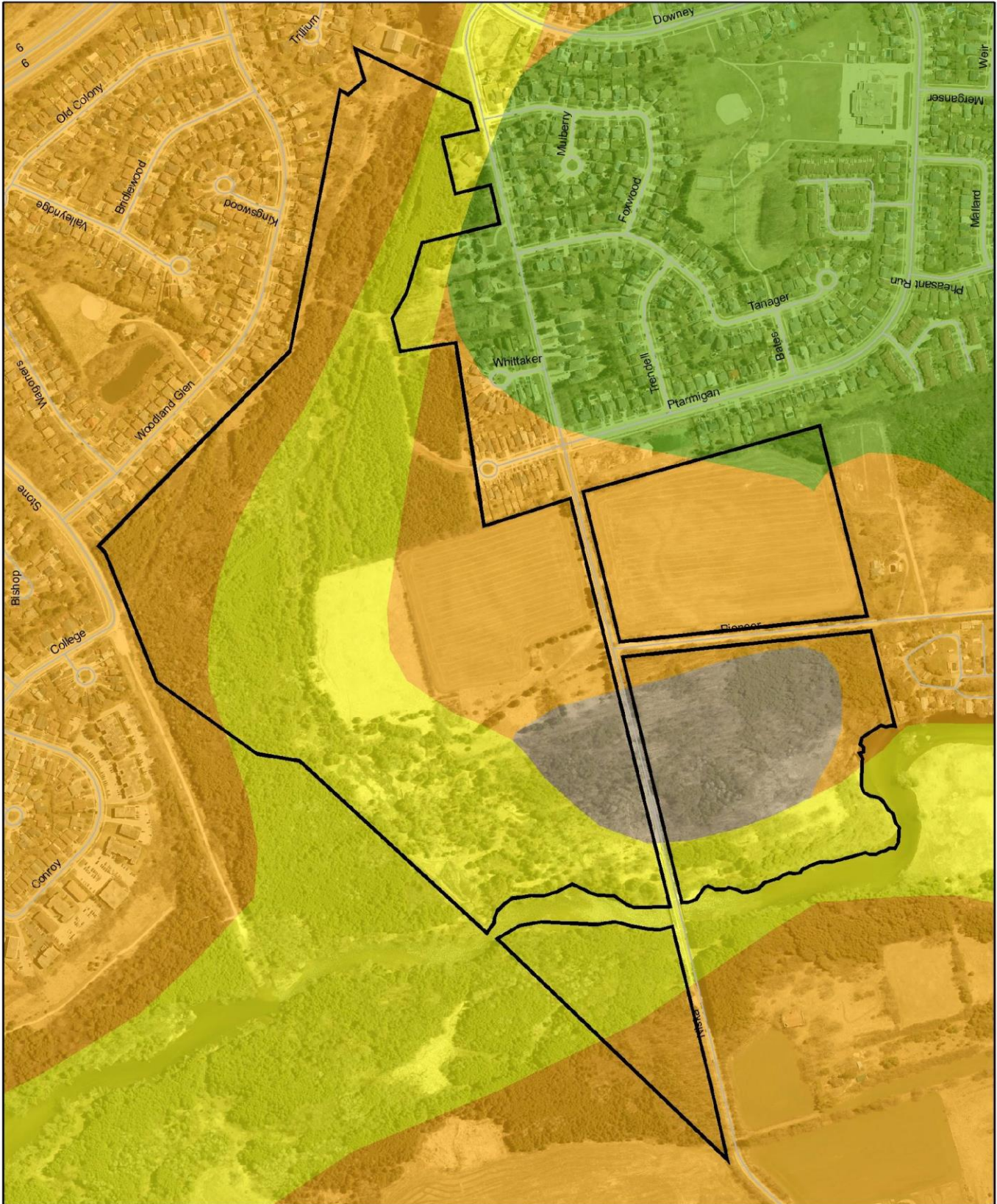
GRCA Disclaimer Statement:
This map is for information purposes only, and the Grand River Conservation Authority takes no responsibility for, nor guarantees, the accuracy of all the information contained within this map.
Copyright. Grand River Conservation Authority 2022. May not be reproduced or altered in any way.

Map 3.2 Surficial Geology

- Legend**
- ROADS
 - NISKA PROPERTY
 - PRIMARY MATERIAL**
 - Till
 - Gravel
 - Organic Deposits
 - Sand

2023 Niska Land Holdings
Management Plan





GRCA Disclaimer Statement:
This map is for information purposes only, and the Grand River Conservation Authority takes no responsibility for, nor guarantees, the accuracy of all the information contained within this map.
Copyright, Grand River Conservation Authority, 2022. May not be reproduced or altered in any way.

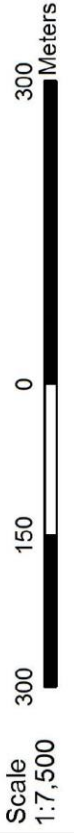
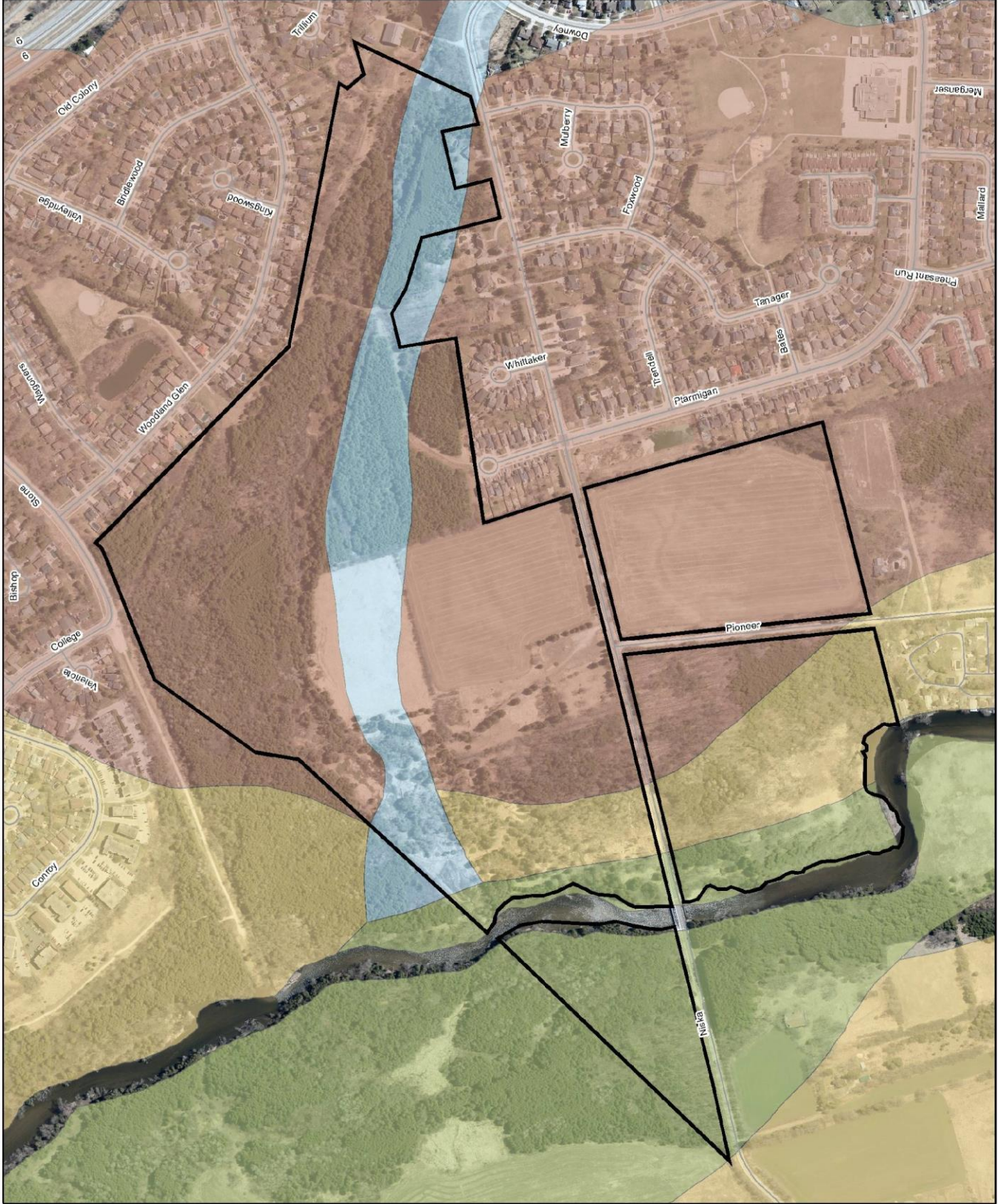
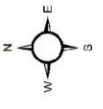
Map 3.3

Soils

Legend

- ROADS
- NISKA PROPERTY
- SOILS**
- BOTTOM LAND
- BURFORD
- DUMFRIES
- STREAM COURSE

Niska / Kortright Master Plan



GRCA Disclaimer Statement:
 This map is for information purposes only, and the Grand River Conservancy Authority takes no responsibility for, nor guarantees, the accuracy of all the information contained within this map.
 Copyright, Grand River Conservancy Authority 2020. May not be reproduced or altered in any way.

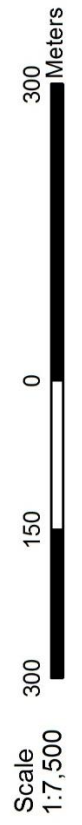
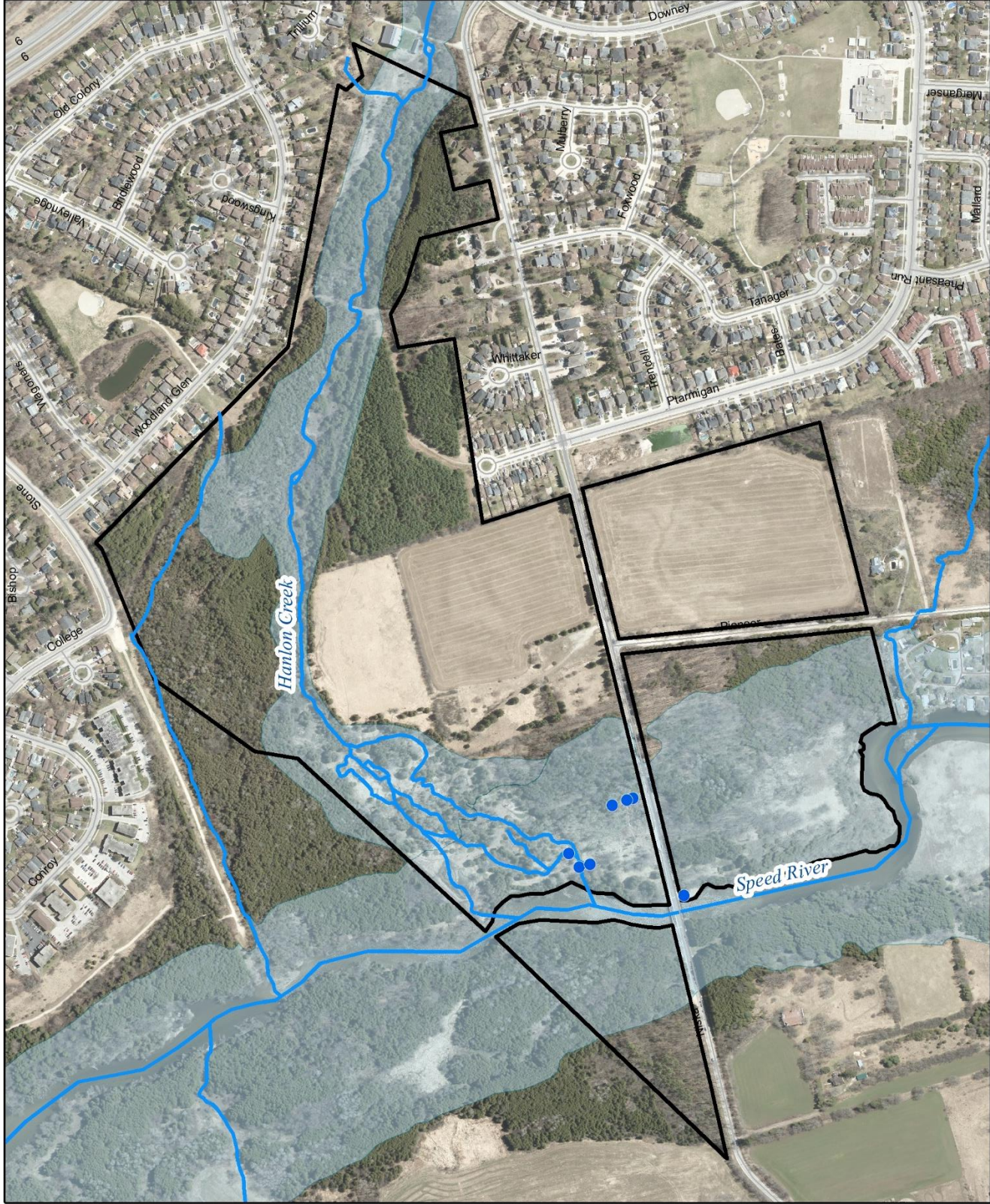
Map 3.4

Hydrology

Legend

- GROUNDWATER SEEPS
- ROADS
- WATERCOURSE
- FLOODPLAIN
- NISKA PROPERTY

2023 Niska Land Holdings Management Plan



GRCA Disclaimer Statement:
This map is for information purposes only, and the Grand River Conservation Authority takes no responsibility for, nor guarantees, the accuracy of all the information contained within this map.
Copyright. Grand River Conservation Authority 2022. May not be reproduced or altered in any way.

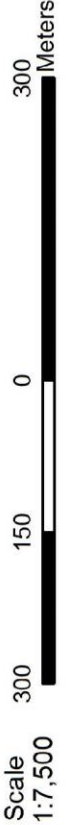
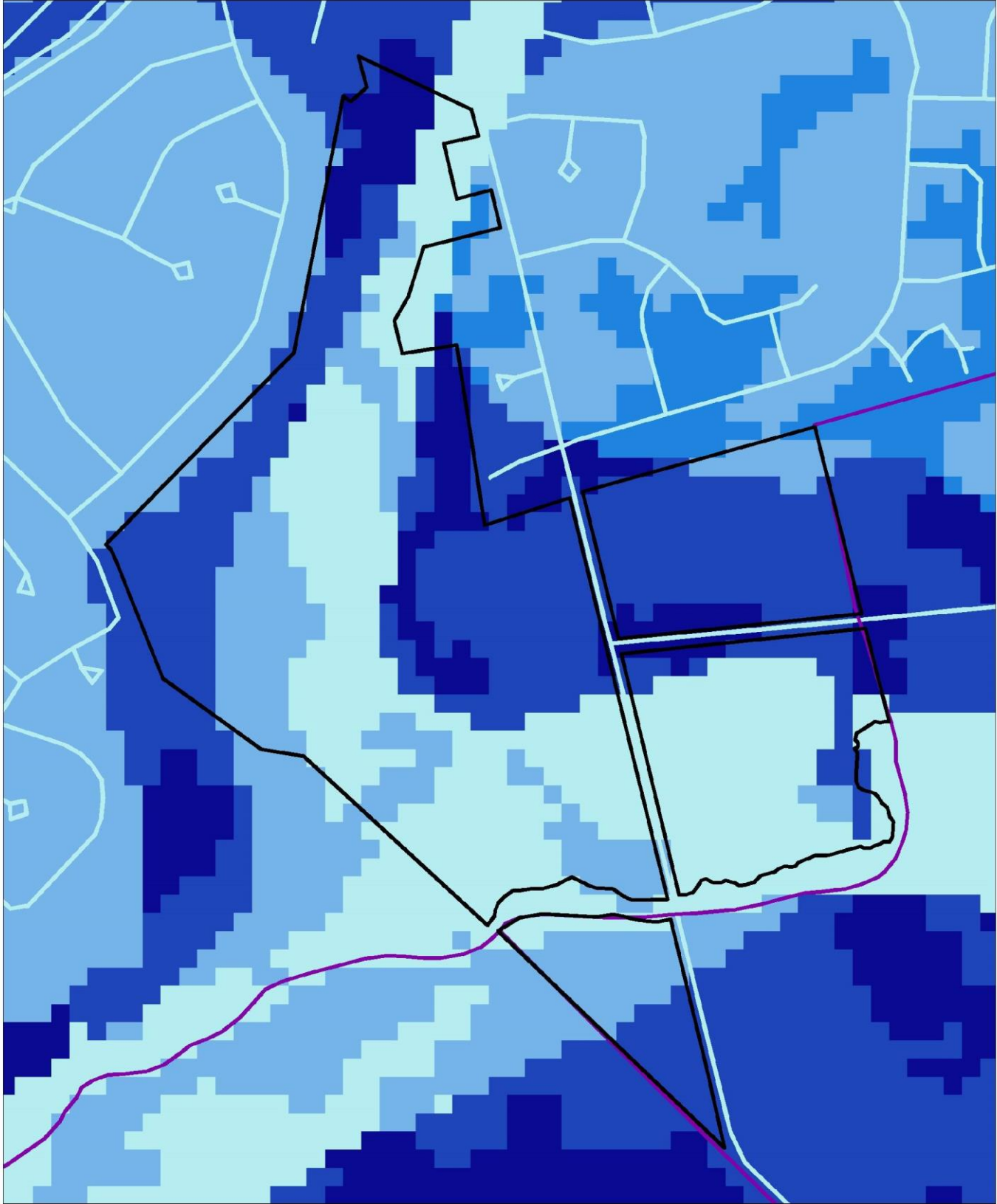
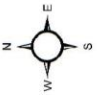
Map 3.5

Groundwater Recharge

Legend

- NISKA PROPERTY
- MUNICIPAL BOUNDARY
- RECHARGE (MM/YR)*
 - 0 - 95
 - 95 - 190
 - 190 - 285
 - 285 - 380
 - 380 - 475

2023 Niska Land Holdings Management Plan



GRCA Disclaimer Statement:
This map is for information purposes only, and the Grand River Conservation Authority takes no responsibility for, nor guarantees, the accuracy of all the information contained within this map.
Copyright, Grand River Conservation Authority 2022. May not be reproduced or altered in any way.

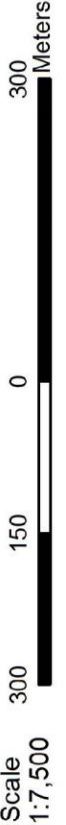
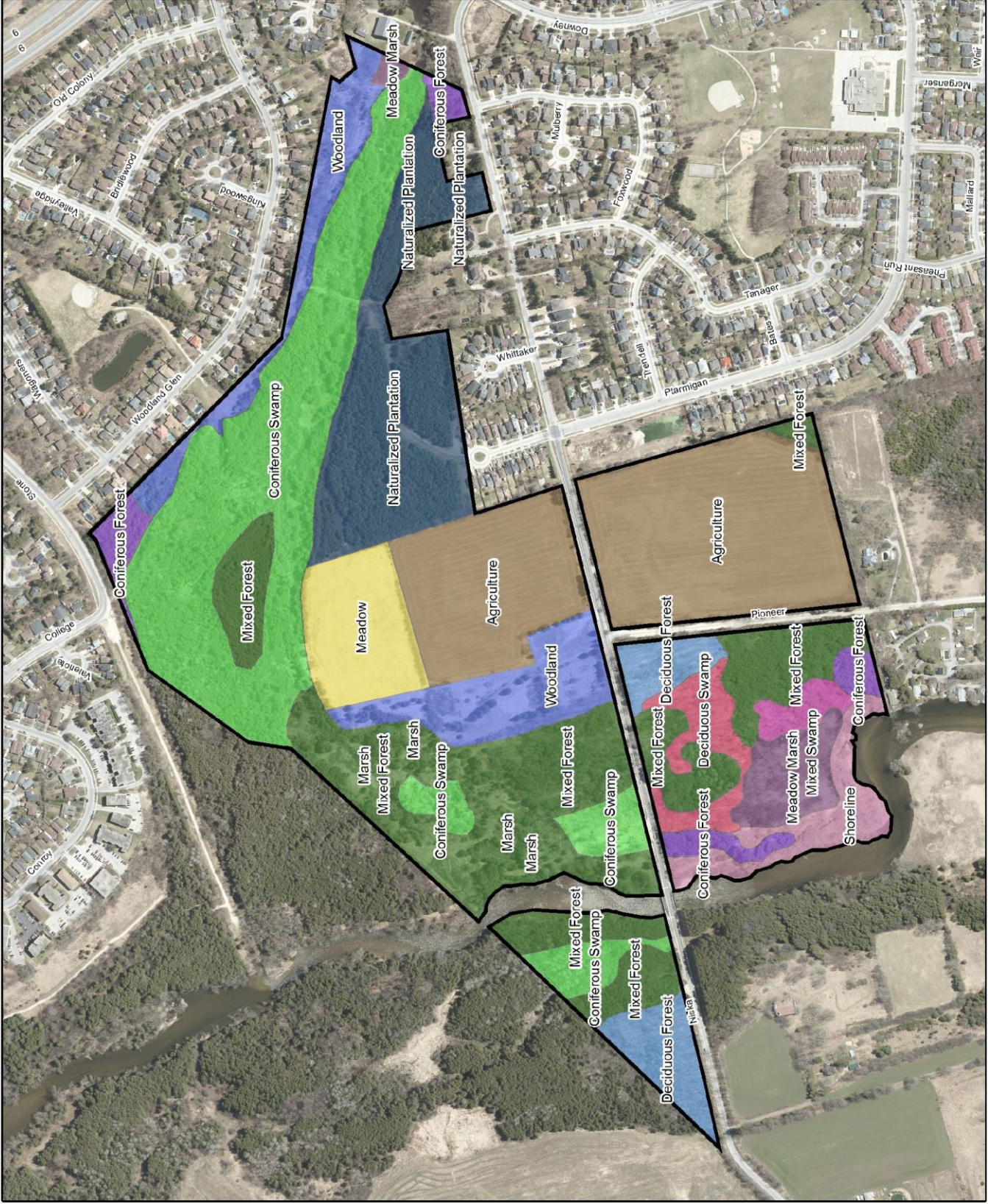
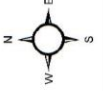
Map 3.6

Ecological Land Classification

Legend

- ROADS
- NISKA PROPERTY
- ELC
- Agriculture
- Coniferous Forest
- Coniferous Swamp
- Deciduous Forest
- Deciduous Swamp
- Marsh
- Meadow
- Meadow Marsh
- Mixed Forest
- Mixed Swamp
- Naturalized Plantation
- Shoreline
- Woodland

2023 Niska Land Holdings Management Plan



GRCA Disclaimer Statement:
 This map is for information purposes only, and the Grand River Conservation Authority takes no responsibility for, nor guarantees, the accuracy of all the information contained within this map.
 Copyright. Grand River Conservation Authority 2022. May not be reproduced or altered in any way.

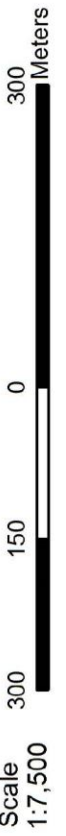
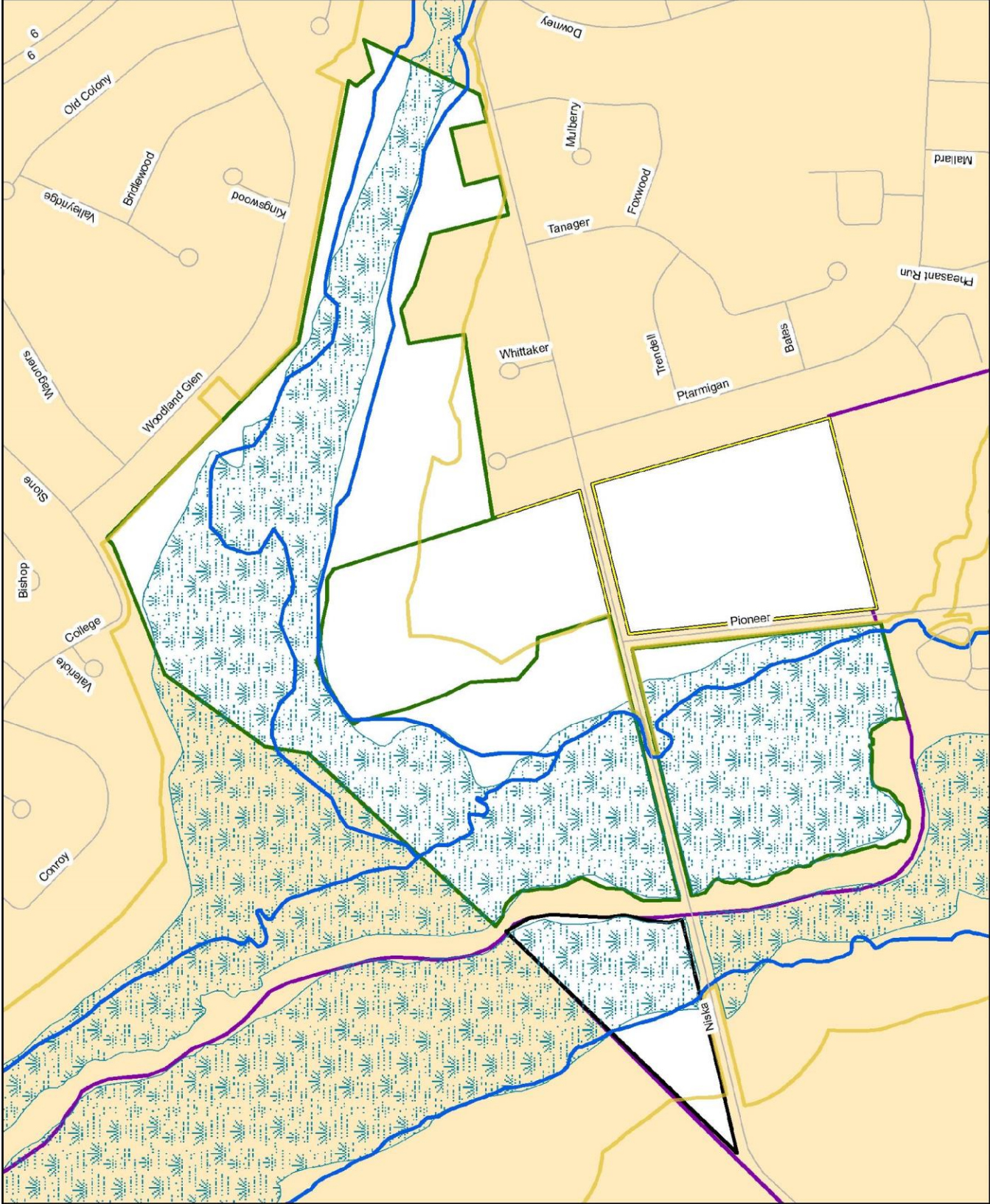
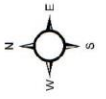
Map 3.7

Ecological Land Designations

Legend

- ROADS
- NISKA PROPERTY
- MUNICIPAL BOUNDARY
- GRCA FLOODPLAIN
- GRCA REGULATION LIMIT
- PSW
- GUELPH NHS
- Green Space
- Significant Natural Area

2023 Niska Land Holdings Management Plan



GRCA Disclaimer Statement:
This map is for information purposes only, and the Grand River Conservation Authority takes no responsibility for, nor guarantees, the accuracy of all the information contained within this map.
Copyright: Grand River Conservation Authority 2022. May not be reproduced or altered in any way.

Appendix B:List of Plant Species

Species lists below include common and scientific names, conservation priority ranks assigned by the Natural Heritage Information Centre, and the status assigned by the Committee on the Status of Endangered Wildlife in Canada (COSEWIC) and/or the Committee on the Status of Species At Risk in Ontario (COSSARO). Species lists are based on GRCA field data and data acquired from external sources. The tables reflect information that was available at the time of preparing this management plan.

Glossary of Terms:

Provincial Rank

S1= Critically Imperiled, S2= Imperiled, S3=Vulnerable, S4= Apparently Secure, S5= Secure, SH=Historic; SE= Exotic in Ontario (non-indigenous species) NAR= Not At Risk

Committee on the Status of Endangered Wildlife in Canada (COSEWIC)

EXP = Extirpated; END = Endangered; THR = Threatened; SC = Special Concern; SNA = Status Not Assessed

At the time of this report, there are no COSEWIC species listed on Schedule 1 of the federal Species at Risk Act

Committee on the Status of Species at Risk in Ontario (COSSARO)

Provincial Endangered Species Act. In order of severity, statuses include: EXP = Extirpated; END = Endangered; THR = Threatened; SC = Special Concern; NL = Not Listed

Exotic Status: Rank assigned to non-indigenous species.

CC: Coefficient of conservatism

CW: Coefficient of Wetness

Information Sources:

(*) ELC 2018

*** iNaturalist contributors, iNaturalist (2023). iNaturalist Research-grade Observations. iNaturalist.org. Occurrence dataset <https://doi.org/10.15468/ab3s5x> accessed via GBIF.org on 2023-03-08.

Scientific Name	Common Name	Provincial Rank	COSSARO Status	Exotic Status	CC	CW
Trees & Shrubs						
<i>Abies balsamea</i>	Balsam Fir(*)	S5			5	-3
<i>Acer ginnala</i>	Amur Maple***	SNA		SE1		5
<i>Acer negundo</i>	Manitoba Maple(*)	S5			0	0
<i>Acer platanoides</i>	Norway Maple(*)	SNA		SE5		5
<i>Acer rubrum</i>	Red Maple(*)	S5			4	0
<i>Acer saccharum</i>	Sugar Maple(*)	S5			4	3
<i>Acer x freemanii</i>	Freeman Maple(*)	SNA			6	-5
<i>Alnus glutinosa</i>	European Black Alder(*)	SNA		SE4		-3
<i>Amelanchier spp.</i>	Serviceberry species(*)					
<i>Betula alleghaniensis</i>	Yellow Birch(*)	S5			6	0
<i>Betula papyrifera</i>	Paper Birch(*)	S5			2	3
<i>Carpinus caroliniana</i>	Blue-beech***	S5			6	0
<i>Celtis occidentalis</i>	Common Hackberry(*)	S4			8	0
<i>Cornus alternifolia</i>	Alternate-leaved Dogwood(*)	S5			6	3
<i>Cornus racemosa</i>	Gray Dogwood(*)	S5			2	0
<i>Cornus sericea</i>	Red-osier Dogwood(*)	S5			2	-3
<i>Crataegus species</i>	Hawthorn species(*)					
<i>Fagus grandifolia</i>	American Beech(*)	S4			6	3
<i>Frangula alnus</i>	Glossy Buckthorn(*)	SNA		SE5		0
<i>Fraxinus americana</i>	White Ash(*)	S4			4	3
<i>Fraxinus nigra</i>	Black Ash(*)	S3	END		7	-3
<i>Fraxinus pennsylvanica</i>	Green Ash(*)	S4			3	-3
<i>Juglans nigra</i>	Black Walnut(*)	S4?			5	3
<i>Larix laricina</i>	Tamarack(*)	S5			7	-3
<i>Ligustrum vulgare</i>	European Privet(*)	SNA		SE5		3
<i>Lonicera tatarica</i>	Tatarian Honeysuckle(*)	SNA		SE5		3
<i>Morus alba</i>	White Mulberry(*)	SNA		SE5		0
<i>Ostrya virginiana</i>	Eastern Hop-hornbeam(*)	S5			4	3
<i>Picea abies</i>	Norway Spruce(*)	SNA		SE3		5
<i>Picea glauca</i>	White Spruce(*)	S5			6	3
<i>Pinus strobus</i>	Eastern White Pine(*)	S5			4	3
<i>Pinus sylvestris</i>	Scots Pine(*)	SNA		SE5		3
<i>Populus balsamifera</i>	Balsam Poplar(*)	S5			4	-3
<i>Populus deltoides</i>	Eastern Cottonwood(*)	S5			4	0
<i>Populus spp.</i>	Poplar species(*)					
<i>Populus tremuloides</i>	Trembling Aspen(*)	S5			2	0
<i>Prunus serotina</i>	Black Cherry(*)	S5			3	3
<i>Prunus virginiana</i>	Choke Cherry(*)	S5			2	3

Scientific Name	Common Name	Provincial Rank	COSSARO Status	Exotic Status	CC	CW
<i>Quercus alba</i>	White Oak(*)	S5			6	3
<i>Quercus macrocarpa</i>	Bur Oak(*)	S5			5	3
<i>Rhamnus cathartica</i>	Common Buckthorn***(*)	SNA		SE5		0
<i>Rhus typhina</i>	Staghorn Sumac(*)	S5			1	3
<i>Salix alba</i>	White Willow(*)	SNA		SE4		-3
<i>Salix amygdaloides</i>	Peach-leaved Willow(*)	S5			6	-3
<i>Salix eriocephala</i>	Heart-leaved Willow(*)	S5			4	-3
<i>Salix petiolaris</i>	Meadow Willow(*)	S5			3	-3
<i>Salix spp.</i>	Willow Species(*)					
<i>Sambucus racemosa</i>	Red Elderberry(*)	S5			5	3
<i>Sambucus spp.</i>	Elderberry species(*)					
<i>Sorbus aucuparia</i>	European Mountain-ash(*)	SNA		SE4		5
<i>Thuja occidentalis</i>	Eastern White Cedar(*)	S5			4	-3
<i>Tilia Americana</i>	American Basswood(*)	S5			4	3
<i>Tsuga canadensis</i>	Eastern Hemlock***	S5			7	3
<i>Ulmus americana</i>	American Elm(*)	S5			3	-3
<i>Viburnum opulus ssp. trilobum</i>	Highbush Cranberry(*)	S5			5	-3
<i>Zanthoxylum americanum</i>	Common Prickly-ash(*)	S5			3	3
Forbs						
<i>Aegopodium podagraria</i>	Goutweed(*)	SNA		SE5		0
<i>Alisma triviale</i>	Northern Water-plantain(*)	S5			1	-5
<i>Alliaria petiolate</i>	Garlic Mustard(*)	SNA		SE5		0
<i>Allium canadense</i>	Canada Garlic(*)	S5			8	3
<i>Ambrosia artemisiifolia</i>	Common Ragweed(*)	S5			0	3
<i>Anemonastrum canadense</i>	Canada Anemone(*)	S5			3	-3
<i>Aquilegia canadensis</i>	Red Columbine(*)	S5			5	3
<i>Arisaema triphyllum</i>	Jack-in-the-pulpit(*)	S5			5	-3
<i>Asarum canadense</i>	Canada Wild-ginger(*)	S5			6	5
<i>Asclepias incarnate</i>	Swamp Milkweed	S5			6	-5
<i>Asclepias syriaca</i>	Common Milkweed(*)	S5			0	5
<i>Athyrium filix-femina</i>	Common Lady Fern(*)	S5			4	0
<i>Ballota nigra</i>	Black Horehound(*)	SNA		SE1		
<i>Bidens cernua</i>	Nodding Beggar ticks(*)	S5			2	-5
<i>Bidens tripartite</i>	Three-parted Beggar ticks(*)	S5?			5	-3
<i>Brassica sp.</i>	mustard species(*)					
<i>Caltha palustris</i>	Yellow Marsh Marigold(*)	S5			5	-5
<i>Campanula sp.</i>	Bellflower species(*)					
<i>Cardamine concatenata</i>	Cut-leaved Toothwort(*)	S5			6	3

Scientific Name	Common Name	Provincial Rank	COSSARO Status	Exotic Status	CC	CW
<i>Caulophyllum giganteum</i>	Giant Blue Cohosh***	S5			5	5
<i>Caulophyllum thalictroides</i>	Blue Cohosh(*)	S5			5	5
<i>Chara sp.</i>	Chara species					
<i>Chelidonium majus</i>	Greater Celandine	SNA		SE5		5
<i>Chelone glabra</i>	White Turtlehead***	S5			7	-5
<i>Cicuta bulbifera</i>	Bulb-bearing Water-hemlock	S5			5	-5
<i>Cicuta maculata</i>	Spotted Water-hemlock	S5			6	-5
<i>Circaea canadensis</i>	Broadleaf enchanter's nightshade	S5				
<i>Cirsium arvense</i>	Canada Thistle	SNA		SE5		3
<i>Conocephalum salebrosum</i>	Cat-tongue Liverwort	S5				
<i>Cypripedium parviflorum</i>	Yellow Lady's-slipper	S5			5	0
<i>Cypripedium pubescens</i>	Large yellow slipper	S5				
<i>Cystopteris bulbifera</i>	Bulblet Fern(*)	S5			5	-3
<i>Daucus carota</i>	Wild Carrot(*)	SNA		SE5		5
<i>Dipsacus fullonum</i>	Common Teasel(*)	SNA		SE5		3
<i>Dryopteridaceae Famly</i>	Wood Fern Species(*)					
<i>Dryopteris carthusiana</i>	Spinulose Wood Fern	S5			5	-3
<i>Echinocystis lobata</i>	Wild Cucumber***(*)	S5			3	-3
<i>Eleocharis mamillata</i>	Soft-stemmed Spikerush(*)	S1				-5
<i>Elymus virginicus</i>	Virginia wildrye***	S5			5	-3
<i>Epilobium hirsutum</i>	Hairy Willowherb(*)	SNA		SE5		-3
<i>Epipactis helleborine</i>	Eastern Helleborine(*)	SNA		SE5		3
<i>Equisetum pratense</i>	Meadow Horsetail(*)	S5			8	-3
<i>Erigeron hyssopifolius</i>	Daisy Fleabane(*)	S5			10	-3
<i>Erigeron philadelphicus</i>	Philadelphia Fleabane(*)	S5			1	-3
<i>Eupatorium perfoliatum</i>	Common Boneset(*)	S5			2	-3
<i>Eurybia macrophylla</i>	Large-leaved Aster(*)	S5			5	5
<i>Eutrochium maculatum</i>	Spotted Joe Pye Weed***(*)	S5			3	-5
<i>Fragaria vesca ssp. vesca</i>	Woodland Strawberry(*)	SNA		SE		3
<i>Fragaria virginiana</i>	Virginia strawberry	S5			2	3
<i>Galium palustre</i>	Marsh Bedstraw(*)	S5			5	-5
<i>Galium sp.</i>	Bedstraw species(*)					
<i>Geranium robertianum</i>	Herb-Robert(*)	S5			2	3
<i>Geum aleppicum</i>	Yellow Avens(*)	S5			2	0
<i>Geum canadense</i>	White Avens(*)	S5			3	0
<i>Geum fragarioides</i>	Barren strawberry(*)	S5			5	5

Scientific Name	Common Name	Provincial Rank	COSSARO Status	Exotic Status	CC	CW
<i>Glyceria striata</i>	Fowl Mannagrass(*)	S5			3	-5
<i>Hepatica acutiloba</i>	Sharp-lobed hepatica(*)	S5			8	5
<i>Hesperis matronalis</i>	Dame's Rocket(*)	SNA		SE5		3
<i>Hostas sp.</i>	Hosta(*)					
<i>Hydrophyllum virginianum</i>	Virginia Waterleaf(*)	S5			6	0
<i>Hypericum perforatum</i>	Common St. John's-wort(*)	SNA		SE5		5
<i>Impatiens capensis</i>	Spotted Jewelweed(*)	S5			4	-3
<i>Impatiens glandulifera</i>	Purple Jewelweed***	SNA		SE4		-3
<i>Ipomoea lacunosa</i>	White Morning Glory(*)	SNA		SEH		
<i>Iris sp.</i>	Iris species(*)					
<i>Iris pseudacorus</i>	Yellow Iris	SNA		SE4		
<i>Iris versicolor</i>	Harlequin Blue Flag(*)	S5			5	-5
<i>Jacobaea vulgaris</i>	Tansy Ragwort***(*)	SNA		SE1		5
<i>Laportea canadensis</i>	Wood Nettle(*)	S5			6	-3
<i>Leonurus cardiaca</i>	Common Motherwort(*)	SNA		SE5		5
<i>Lepidium virginicum</i>	Poor-man's Peppergrass(*)	S5			0	3
<i>Leptosporangiate sp.</i>	Fern species(*)					
<i>Leucanthemum vulgare</i>	Oxeye Daisy(*)	SNA		SE5		5
<i>Linaria vulgaris</i>	Butter-and-eggs(*)	SNA		SE5		5
<i>Lycopus americanus</i>	American Water-horehound(*)	S5			4	-5
<i>Lysimachia nummularia</i>	Creeping Jennie(*)	SNA		SE5		-3
<i>Lysimachia thysiflora</i>	Tufted Loosestrife***	S5			7	-5
<i>Lythrum salicaria</i>	Purple Loosestrife(*)	SNA		SE5		-5
<i>Maianthemum canadense</i>	Wild Lily-of-the-valley(*)	S5			5	3
<i>Maianthemum racemosum</i>	Large False Solomon's Seal(*)	S5			4	3
<i>Marrubium vulgare</i>	Common Horehound(*)	SNA		SE2		3
<i>Matteuccia struthiopteris</i>	Ostrich Fern(*)	S5			5	0
<i>Medicago lupulina</i>	Black Medic(*)	SNA		SE5		3
<i>Menispermum canadense</i>	Canada Moonseed(*)	S4			7	0
<i>Mentha sp.</i>	Mint species(*)					
<i>Myosotis sp.</i>	Garden forget-me-not(*)					
<i>Myosotis laxa</i>	Small Forget-me-not(*)	S5			6	-5
<i>Myosotis scorpioides</i>	True Forget-me-not(*)	SNA		SE5		-5
<i>Myosotis sp.</i>	Forget-me-not-species(*)					
<i>Nasturtium officinale</i>	Watercress(*)	SNA		SE		-5
<i>Oenothera biennis</i>	Common Evening-primrose(*)	S5			0	3
<i>Onoclea sensibilis</i>	Sensitive Fern***(*)	S5			4	-3
<i>Osmunda claytoniana</i>	Interrupted fern(*)	S5			7	0

Scientific Name	Common Name	Provincial Rank	COSSARO Status	Exotic Status	CC	CW
<i>Oxalis sp.</i>	Wood sorrel species(*)					
<i>Oxalis stricta</i>	Upright Yellow Wood-sorrel(*)	S5			0	3
<i>Panicum dichotomiflorum</i>	Smooth Witchgrass(*)	SNA		SE5		-3
<i>Parthenocissus quinquefolia</i>	Virginia Creeper(*)	S4?			6	3
<i>Pastinaca sativa</i>	Wild Parsnip(*)	SNA		SE5		5
<i>Persicaria hydropiper</i>	Marshpepper Smartweed(*)	SNA		SE5		-5
<i>Persicaria sp.</i>	Persicaria sp.(*)					
<i>Persicaria virginiana</i>	Virginia Smartweed(*)	S4			6	0
<i>Pilea fontana</i>	Lesser Clearweed(*)	S4			5	-3
<i>Pilea pumila</i>	Dwarf Clearweed(*)	S5			5	-3
<i>Plantago lanceolata</i>	English Plantain(*)	SNA		SE5		3
<i>Plantago major</i>	Common Plantain(*)	SNA		SE5		3
<i>Podophyllum peltatum</i>	May-apple(*)	S5			5	3
<i>Potamogeton crispus</i>	Curly-leaved Pondweed(*)	SNA		SE5		-5
<i>Ranunculus acris</i>	Tall Buttercup(*)	SNA		SE5		0
<i>Ranunculus repens</i>	Creeping Buttercup(*)	SNA		SE5		0
<i>Ranunculus sceleratus</i>	Cursed Buttercup(*)	S5			2	-5
<i>Ranunculus sp.</i>	Buttercup species(*)					
<i>Ribes americanum</i>	Wild Black Currant(*)	S5			4	-3
<i>Ribes sp.</i>	Raspberry species(*)					
<i>Rubus allegheniensis</i>	Allegheny Blackberry(*)	S5			2	3
<i>Rubus idaeus</i>	Common Red Raspberry(*)	S5			2	3
<i>Rudbeckia hirta</i>	Black-eyed Susan(*)	S5			0	3
<i>Rumex crispus</i>	Curly Dock(*)	SNA		SE5		0
<i>Rumex sp.</i>	Dock species(*)					
<i>Sagittaria cuneata</i>	Northern Arrowhead(*)	S5			7	-5
<i>Sanguinaria canadensis</i>	Bloodroot(*)	S5			5	3
<i>Scirpus atrovirens</i>	Dark-green Bulrush(*)	S5			3	-5
<i>Senecio vulgaris</i>	Common Ragwort***	SNA		SE5		5
<i>Silene vulgaris</i>	Bladder Champion***	SNA		SE5		5
<i>Sium suave</i>	Hemlock Water-parsnip(*)	S5			4	-5
<i>Solanum dulcamara</i>	Bittersweet Nightshade(*)	SNA		SE5		0
<i>Solidago canadensis</i>	Canada Goldenrod(*)	S5			1	3
<i>Solidago flexicaulis</i>	Zigzag Goldenrod(*)	S5			6	3
<i>Solidago gigantea</i>	Giant Goldenrod***	S5			4	-3
<i>Solidago patula</i>	Round-leaved Goldenrod(*)	S4			8	-5
<i>Solidago rugosa</i>	Rough-stemmed Goldenrod(*)	S5			4	0
<i>Solidago sp.</i>	Goldenrod species					

Scientific Name	Common Name	Provincial Rank	COSSARO Status	Exotic Status	CC	CW
<i>Symphotrichum puniceum</i>	Swamp Aster(*)	S5			6	-5
<i>Symphotrichum sp.</i>	Aster species(*)					
<i>Taraxacum officinale</i>	Common Dandelion(*)	SNA		SE5		3
<i>Thalictrum pubescens</i>	Tall Meadow-rue(*)	S5			5	-3
<i>Thelypteris palustris</i>	Marsh Fern(*)	S5			5	-3
<i>Toxicodendron radicans</i>	Poison Ivy(*)	S5			2	0
<i>Tragopogon dubius</i>	Yellow Goat's-beard(*)	SNA		SE5		5
<i>Trifolium hybridum</i>	Alsike Clover(*)	SNA		SE5		3
<i>Trifolium pretense</i>	Red Clover(*)	SNA		SE5		3
<i>Trillium grandiflorum</i>	White Trillium(*)	S5			5	3
<i>Triosteum aurantiacum</i>	Orange-fruited Horse-gentian(*)	S4S5			7	5
<i>Tussilago farfara</i>	Coltsfoot(*)	SNA		SE5		3
<i>Typha angustifolia</i>	Narrow-leaved Cattail(*)	SNA		SE5		-5
<i>Typha latifolia</i>	Broad-leaved Cattail(*)	S5			1	-5
<i>Urtica dioica</i>	Stinging Nettle(*)	S5			2	0
<i>Verbascum Thapsus</i>	Common Mullein(*)	SNA		SE5		5
<i>Verbena hastata</i>	Blue Vervain***	S5			4	-3
<i>Verbena urticifolia</i>	White Vervain(*)	S5			4	0
<i>Veronica anagallis-aquatica</i>	Water Speedwell***	SNA		SE		-5
<i>Viburnum opulus</i>	Highbush Cranberry(*)	S5			5	-3
<i>Vinca minor</i>	Periwinkle(*)	SNA		SE5		5
<i>Viola sororia</i>	Woolly Blue Violet(*)	S5			4	0
<i>Viola sp.</i>	Violet species(*)					
<i>Vitis riparia</i>	Riverbank Grape(*)	S5			0	0
<i>Zizania palustris</i>	Northern Wild Rice(*)	S5?			9	-5
<i>Zizia aurea</i>	Golden Alexanders(*)	S5			7	0
	Floating algae(*)					
Grasses						
<i>Bromus inermis</i>	Smooth Brome(*)	SNA		SE5		5
<i>Dactylis glomerata</i>	Orchard Grass(*)	SNA		SE5		3
<i>Leersia oryzoides</i>	Rice Cutgrass(*)	S5			3	-5
<i>Phalaris arundinacea</i>	Reed Canary Grass(*)	S5			0	-3
<i>Phragmites australis ssp. australis</i>	Common Reed(*)	SNA		SE5		-3
<i>Poa compressa</i>	Canada Bluegrass(*)	SNA		SE5		3
Sedges						
<i>Carex aquatilis</i>	Water Sedge(*)	S5			7	-5
<i>Carex arcata</i>	Drooping Woodland Sedge(*)	S5			5	5

Scientific Name	Common Name	Provincial Rank	COSSARO Status	Exotic Status	CC	CW
<i>Carex aurea</i>	Golden Sedge(*)	S5			4	-3
<i>Carex gracillima</i>	Graceful Sedge(*)	S5			4	3
<i>Carex granularis</i>	Limestone Meadow Sedge(*)	S5			3	-3
<i>Carex hystericina</i>	Porcupine Sedge(*)	S5			5	-5
<i>Carex interior</i>	Inland Sedge(*)	S5			6	-5
<i>Carex laevivaginata</i>	Smooth-sheathed Sedge(*)	S4			8	-5
<i>Carex leptalea</i>	Bristle-stalked Sedge(*)	S5			8	-5
<i>Carex pensylvanica</i>	Pennsylvania Sedge(*)	S5			5	5
<i>Carex pseudocyperus</i>	Cyperus-like Sedge(*)	S5			6	-5
<i>Carex retrorsa</i>	Retrorse Sedge(*)	S5			5	-5
<i>Carex stipata</i>	Awl-fruited Sedge(*)	S5			3	-5
<i>Carex stricta</i>	Tussock Sedge(*)	S5			4	-5
<i>Carex vulpinoidea</i>	Fox Sedge(*)	S5			3	-5
<i>Bryophyta</i>	moss species(*)					
<i>Tortella tortuosa</i>	Frizzled Twisted Moss***	S5				

Appendix C: List of Bird Species

Breeding Status Codes

(O) Breeding Observed

- X = species observed in its breeding season (no breeding evidence).

(PO) Breeding Possible

- H = species observed in its breeding season in suitable nesting habitat.
- S = singing male(s) present, or breeding calls heard, in suitable nesting habitat in breeding season.

(PR) Breeding Probable

- P = pair observed in suitable nesting habitat in nesting season.
- T = permanent territory presumed through registration of territorial behaviour (song, etc.) on at least two days, a week or more apart, at the same place.
- D = courtship or display, including interaction between a male and a female or two males, including courtship feeding or copulation.

(CO) Confirmed

- DD = distraction display or injury feigning.
- NU = used nest or egg shells found (occupied or laid within the period of the survey). FY = recently fledged young (nidicolous species) or downy young (nidifugous species), including incapable of sustained flight.
- AE = adult leaving or entering nest sites in circumstances indicating occupied nest.
- FS = adult carrying fecal sac.
- CF = adult carrying food for young.
- NE = nest containing eggs.
- NY = nest with young seen or heard.

Information Sources

* Natural Heritage GRCA, 2018 *** iNaturalist

**eBird, 2019 (*) ELC 2018

**** Burnside, 2016. Niska Road Improvements Schedule C Municipal Class EA Environmental Study Report. Appendix E

Scientific Name	Common Name	Breeding Status	Provincial Rank	COSEWIC Status	COSSARO Status	Habitat Requirement
<i>Acanthis flammea</i>	Common Redpoll **		S5			Forest
<i>Accipiter cooperii</i>	Cooper's Hawk *	Pr	S4	NAR	NAR	Forest
<i>Accipiter striatus</i>	Sharp-shinned Hawk **	Pr	S5	NAR	NAR	Forest
<i>Agelaius phoeniceus</i>	Red-winged Blackbird *	Co	S5			Wetland
<i>Anas acuta</i>	Northern Pintail***		S5B,S4N			
<i>Anas platyrhynchos</i>	Mallard *	Co	S5			Wetland
<i>Anas rubripes</i>	American Black Duck ***	O	S4			Wetland
<i>Anthus rubescens</i>	American Pipit **		S4B			Grassland
<i>Archilochus colubris</i>	Ruby-throated Hummingbird **	Pr	S5B			Forest
<i>Ardea herodias</i>	Great Blue Heron *	Co	S4			Wetland
<i>Aythya collaris</i>	Ring-necked Duck ***	O	S5B,S4N			Wetland
<i>Bombycilla cedrorum</i>	Cedar Waxwing **	Pr	S5			Forest/Grassland
<i>Bombycilla garrulus</i>	Bohemian Waxwing **		S4B,S5N			Forest
<i>Branta canadensis</i>	Canada Goose *, ***	Co	S5			Wetland
<i>Bubo virginianus</i>	Great Horned Owl **	Pr	S4			Forest
<i>Bucephala albeola</i>	Bufflehead		S5			Wetland
<i>Bucephala clangula</i>	Common goldeneye (*)***		S5			Wetland
<i>Buteo jamaicensis</i>	Red-tailed Hawk *(*)	Pr	S5	NAR	NAR	Forest/Grassland
<i>Buteo lagopus</i>	Rough-legged Hawk ***		S1B,S4N	NAR	NAR	Forest/Grassland
<i>Cardellina canadensis</i>	Canada Warbler **	O	S5B	SC	SC	Forest
<i>Cardellina pusilla</i>	Wilson's Warbler **	O	S5B			Wetland
<i>Cardinalis cardinalis</i>	Northern Cardinal * (*)	Pr	S5			Forest/Grassland
<i>Cathartes aura</i>	Turkey Vulture **	Pr	S5B,S3N			Forest
<i>Catharus fuscescens</i>	Veery ** (*)	Pr	S5B			Forest
<i>Catharus guttatus</i>	Hermit Thrush **	O	S5B,S4N			Forest
<i>Certhia americana</i>	Brown Creeper **	Po	S5			Forest
<i>Megaceryle alcyon</i>	Belted Kingfisher **	Pr	S5B,S4N			Wetland
<i>Charadrius vociferus</i>	Killdeer *	Co	S4B			Grassland
<i>Circus hudsonius</i>	Northern Harrier **	Co	S5B,S4N	NAR	NAR	Grassland
<i>Coccothraustes vespertinus</i>	Evening Grosbeak **		S4	SC	SC	Forest
<i>Coccyzus erythrophthalmus</i>	Black-billed Cuckoo ***	O	S4S5B			Forest
<i>Colaptes auratus</i>	Northern Flicker *, ***	Pr	S5			Forest
<i>Columba livia</i>	Rock Dove **	Co	SE			Forest/Grassland
<i>Contopus virens</i>	Eastern Wood-pewee **	Pr	S4B	SC	SC	Forest
<i>Corthylio calendula</i>	Ruby-crowned Kinglet **		S5B,S3N			Forest
<i>Corvus brachyrhynchos</i>	American Crow * (*)	Co	S5			Forest
<i>Corvus corax</i>	Common Raven **	Pr	S5			Forest
<i>Cyanocitta cristata</i>	Blue Jay * (*) ***	Co	S5			Forest
<i>Cygnus buccinator</i>	Trumpeter Swan ***	O	S4	NAR		Wetland

Scientific Name	Common Name	Breeding Status	Provincial Rank	COSEWIC Status	COSSARO Status	Habitat Requirement
<i>Dryobates pubescens</i>	Downy Woodpecker ***	Pr	S5			Forest
<i>Dryobates villosus</i>	Hairy Woodpecker ***	Pr	S5			Forest
<i>Dryocopus pileatus</i>	Pileated Woodpecker **	Pr	S4S5			Forest
<i>Dumetella carolinensis</i>	Gray Catbird **	Pr	S5B,S3N			Wetland/Forest/Grassland
<i>Empidonax traillii</i>	Willow Flycatcher (*)	Pr	S4B			Wetland/Forest
<i>Eremophila alpestris</i>	Horned Lark **	Pr	S4			Grassland
<i>Euphagus carolinus</i>	Rusty Blackbird **	O	S4B,S3N	SC	NAR	Wetland/Forest
<i>Falco columbarius</i>	Merlin***	O	S5	NAR	NAR	Forest
<i>Falco sparverius</i>	American Kestrel **	Co	S4			Forest/Grassland
<i>Geothlypis trichas</i>	Common Yellowthroat * (*)	Pr	S5B,S3N			Wetland/Forest/Grassland
<i>Haliaeetus leucocephalus</i>	Bald Eagle ***	O	S4	NAR	SC	Forest
<i>Haemorhous mexicanus</i>	House Finch **	Pr	SE			Grassland
<i>Haemorhous purpureus</i>	Purple Finch **	Po	S5			Forest
<i>Hirundo rustica</i>	Barn Swallow **	Co	S4B	THR	THR	Grassland
<i>Icterus galbula</i>	Baltimore Oriole *	Pr	S4B			Forest/Grassland
<i>Junco hyemalis</i>	Dark-eyed Junco **		S5			Forest
<i>Lanius borealis</i>	Northern Shrike **	O	S4B,S5N			Wetland/Forest
<i>Larus argentatus</i>	Herring Gull **	O	S4B,S5N			Wetland
<i>Larus delawarensis</i>	Ring-billed Gull **	O	S5			Wetland
<i>Lophodytes cucullatus</i>	Hooded Merganser ***	O	S5			Wetland
<i>Megaceryle alcyon</i>	Belted Kingfisher ***	O	S5B,S4N			Forest/Wetland
<i>Melanerpes carolinus</i>	Red-bellied Woodpecker **	O	S4			
<i>Meleagris gallopavo</i>	Wild Turkey **	Co	S4			Forest
<i>Melospiza georgiana</i>	Swamp Sparrow **	Co	S5B,S4N			Wetland
<i>Melospiza melodia</i>	Song Sparrow * (*)	Co	S5			Grassland
<i>Mergus merganser</i>	Common Merganser ***		S5			Wetland
<i>Mergus serrator</i>	Red-breasted Merganser ***		S4			Wetland
<i>Mniotilta varia</i>	Black-and-white Warbler **	Pr	S5B			Forest
<i>Molothrus ater</i>	Brown-headed Cowbird *	Co	S5			Grassland
<i>Myiarchus crinitus</i>	Great Crested Flycatcher *	Co	S5B			Forest
<i>Otus asio</i>	Eastern Screech-owl *	Po	S4	NAR	NAR	Forest
<i>Pandion haliaetus</i>	Osprey **	Co	S5B			Wetland
<i>Passer domesticus</i>	House Sparrow **	Co	SE			Grassland
<i>Passerculus sandwichensis</i>	Savannah Sparrow *	Co	S5B,S3N			Wetland/Grassland

Scientific Name	Common Name	Breeding Status	Provincial Rank	COSEWIC Status	COSSARO Status	Habitat Requirement
<i>Passerella iliaca</i>	Fox Sparrow **		S5B,S3N			Forest
<i>Passerina cyanea</i>	Indigo Bunting *	Co	S5B			Forest/Grassland
<i>Petrochelidon pyrrhonota</i>	Cliff Swallow **	Co	S4S5B			Wetland/Grassland
<i>Pheucticus ludovicianus</i>	Rose-breasted Grosbeak **	Pr	S5B			Forest
<i>Pinicola enucleator</i>	Pine Grosbeak **		S4B,S5N			Forest
<i>Piranga olivacea</i>	Scarlet Tanager **	Pr	S5B			Forest
<i>Plectrophenax nivalis</i>	Snow Bunting **		S4N			Grassland
<i>Poecile atricapillus</i>	Black-capped Chickadee * (*)	Co	S5			Forest
<i>Pooecetes gramineus</i>	Vesper Sparrow **	Po	S4B			Grassland
<i>Quiscalus quiscula</i>	Common Grackle *	Co	S5			Wetland/Forest/Grassland
<i>Regulus satrapa</i>	Golden-crowned Kinglet **	Po	S5			Forest
<i>Riparia riparia</i>	Bank Swallow *	Co	S4B	THR	THR	Wetland/Forest/Grassland
<i>Sayornis phoebe</i>	Eastern Phoebe * (*)	Co	S5B			Forest
<i>Seiurus aurocapilla</i>	Ovenbird **	Po	S5B			Forest
<i>Setophaga castanea</i>	Bay-breasted Warbler **		S5B			Forest
<i>Setophaga coronata</i>	Yellow-rumped Warbler **	Co	S5B,S4N			Forest
<i>Setophaga fusca</i>	Blackburnian Warbler **	O	S5B			Forest
<i>Setophaga magnolia</i>	Magnolia Warbler **	Pr	S5B			Forest
<i>Setophaga palmarum</i>	Palm Warbler **	O	S5B			Wetland/Forest
<i>Setophaga pensylvanica</i>	Chestnut-sided Warbler **	Po	S5B			Forest
<i>Setophaga petechia</i>	Yellow Warbler **	Pr	S5B			Wetland
<i>Setophaga pinus</i>	Pine Warbler **	Po	S5B,S3N			Forest
<i>Setophaga ruticilla</i>	American Redstart **	Pr	S5B			Forest
<i>Setophaga tigrina</i>	Cape May Warbler **		S5B			Forest
<i>Setophaga virens</i>	Black-throated Green Warbler **	Pr	S5B			Forest
<i>Sitta canadensis</i>	Red-breasted Nuthatch *	Po	S5			Forest
<i>Sitta carolinensis</i>	White-breasted Nuthatch *	Pr	S5			Forest
<i>Sphyrapicus varius</i>	Yellow-bellied Sapsucker ****	X	S5B,SZN			Forest
<i>Spinus pinus</i>	Pine Siskin **		S5			Forest
<i>Spinus tristis</i>	American Goldfinch * (*)	Co	S5			Grassland
<i>Spizella passerina</i>	Chipping Sparrow *	Co	S5B,S3N			Forest/Grassland
<i>Spizelloides arborea</i>	American Tree Sparrow **		S5			Forest/Grassland
<i>Stelgidopteryx serripennis</i>	Northern Rough-winged Swallow **	Po	S4B			Wetland/Grassland
<i>Sturnus vulgaris</i>	European Starling *	Co	SE			Forest/Grassland

Scientific Name	Common Name	Breeding Status	Provincial Rank	COSEWIC Status	COSSARO Status	Habitat Requirement
<i>Tachycineta bicolor</i>	Tree Swallow *	Co	S4S5B			Wetland
<i>Thryothorus ludovicianus</i>	Carolina Wren ***	O	S4			Forest/Wetland
<i>Troglodytes aedon</i>	House Wren **	Co	S5B			Forest
<i>Troglodytes hiemalis</i>	Winter Wren **	Po	S5B,S4N			Forest
<i>Turdus migratorius</i>	American Robin *	Co	S5			Forest
<i>Tyrannus tyrannus</i>	Eastern Kingbird *	Co	S4B			Grassland
<i>Vireo olivaceus</i>	Red-eyed Vireo *	Co	S5B			Forest
<i>Vireo philadelphicus</i>	Philadelphia Vireo **	O	S5B			Forest
<i>Zenaidura macroura</i>	Mourning Dove *	Co	S5B			Forest/Grassland
<i>Zonotrichia albicollis</i>	White-throated Sparrow **	Pr	S5			Forest

Appendix D: List of Other Wildlife Species

Type	Scientific Name	Common Name	Provincial Rank	COSEWIC Status	COSSARO Status
Herpetofauna	<i>Anaxyrus americanus</i>	American Toad*	S5		
	<i>Chelydra serpentina</i>	Snapping Turtle***	S4	SC	SC
	<i>Chrysemys picta marginata</i>	Midland Painted Turtle***	S4	SC	
	<i>Dryophytes versicolor</i>	Gray Treefrog*	S5		
	<i>Lampropeltis triangulum</i>	Eastern Milksnake***	S4	SC	NAR
	<i>Lithobates clamitans</i>	Green Frog*	S5		NAR
	<i>Lithobates pipiens</i>	Northern Leopard Frog***	S5	NAR	
	<i>Lithobates sylvaticus</i>	Wood Frog*	S5		
	<i>Pseudacris crucifer</i>	Spring Peeper*	S5		
	<i>Storeria dekayi</i>	Dekay's Brownsnake***	S5		
	<i>Thamnophis sirtalis</i>	Eastern Gartersnake*	S5		
	<i>Trachemys scripta</i>	Pond Slider***	SE2		
Lepidoptera	<i>Acleris nivisellana</i>	Snowy-shouldered Acleris Moth***	S5?		
	<i>Alsophila pometaria</i>	Fall Cankerworm Moth***	S4S5		
	<i>Amphipyra pyramidoides</i>	Copper Underwing Moth***	S4S5		
	<i>Anticlea multiferata</i>	Many-lined Carpet Moth***	S5?		
	<i>Arctia caja</i>	Great Tiger Moth***	S5?		
	<i>Celastrina lucia</i>	Northern Azure***	S5		
	<i>Ciseps fulvicollis</i>	Yellow-collared Scape Moth***	S5		
	<i>Copivaleria grotei</i>	Grote's Sallow Moth***	S4S5		
	<i>Ctenucha virginica</i>	Virginia Ctenucha Moth***	S5		
	<i>Danaus plexippus</i>	Monarch*	S2N,S4B	END	SC
	<i>Ectropis crepuscularia</i>	Small Engrailed Moth***	S5?		
	<i>Erynnis baptisiae</i>	Wild Indigo Duskywing***	S4		
	<i>Euphyes vestris</i>	Dun Skipper***	S5		
	<i>Haploa confusa</i>	Confused Haploa Moth***	S4S5		
	<i>Hyphantria cunea</i>	Fall Webworm Moth***	S5		
	<i>Idia americalis</i>	American Idia Moth***	S5		
	<i>Leuconycta diptheroides</i>	Green Leuconycta Moth	S5		
	<i>Limnitis arthemis astyanax</i>	Red-spotted Purple***	S5		
	<i>Lomographa vestaliata</i>	White Spring Moth***	S5?		
	<i>Lophocampa caryae</i>	Hickory Tussock Moth***	S5		
	<i>Loscopia velata</i>	Veiled Ear Moth***	S4S5		
	<i>Malacosoma americana</i>	Eastern Tent Caterpillar Moth***	S5		
	<i>Maliattha synochitis</i>	Black-dotted Lithacodia Moth***	S5		
	<i>Mythimna unipuncta</i>	Armyworm Moth***	S5		
<i>Nephelodes minians</i>	Bronzed Cutworm Moth***	S5			

Type	Scientific Name	Common Name	Provincial Rank	COSEWIC Status	COSSARO Status
	<i>Nymphalis antiopa</i>	Mourning Cloak***	S5		
	<i>Operophtera bruceata</i>	Bruce Spanworm Moth***	S5?		
	<i>Orthosia hibisci</i>	Speckled Green Fruitworm*** Moth***	S4S5		
	<i>Papilio polyxenes</i>	Black Swallowtail***	S5		
	<i>Phigalia titea</i>	Half-wing Moth***	S4S5		
	<i>Phyciodes cocyta</i>	Northern Crescent	S5		
	<i>Pieris oleracea</i>	Mustard White***	S4		
	<i>Pieris rapae</i>	Cabbage White*	SE		
	<i>Polites themistocles</i>	Tawny-edged Skipper***	S5		
	<i>Polygonia comma</i>	Eastern Comma***	S5		
	<i>Polygonia interrogationis</i>	Question Mark***	S5		
	<i>Protodeltote muscosula</i>	Large Mossy Lithacodia Moth***	S5		
	<i>Pyrrharctia isabella</i>	Isabella Tiger Moth***	S5		
	<i>Sitochroa palealis</i>	Carrot Seed Moth***	SE		
	<i>Synanthedon proxima</i>	Clearwing Moth***	SNR		
Mammals	<i>Canis latrans</i>	Coyote***	S5		
	<i>Marmota monax</i>	Woodchuck***	S5		
	<i>Mustela richardsonii</i>	American Ermine***	S5		
	<i>Myotis sp.</i>	Myotis Bat*			
	<i>Neovison vison</i>	American Mink***	S4		
	<i>Odocoileus virginianus</i>	White-tailed Deer*	S5		
	<i>Sciurus carolinensis</i>	Eastern Gray Squirrel*	S5		
	<i>Sylvilagus floridanus</i>	Eastern Cottontail*	S5		
	<i>Tamias striatus</i>	Eastern Chipmunk*	S5		
	<i>Tamiasciurus hudsonicus</i>	Red Squirrel***	S5		
Odonates	<i>Amphiagrion saucium</i>	Eastern Red Damselfly***	S4		
	<i>Anax junius</i>	Common Green Darner***	S5		
	<i>Calopteryx aequabilis</i>	River Jewelwing***	S5		
	<i>Calopteryx maculata</i>	Ebony Jewelwing*	S5		
	<i>Cordulegaster diastatops</i>	Delta-spotted Spiketail***	S4		
	<i>Hetaerina americana</i>	American Rubyspot***	S4		
	<i>Libellula luctuosa</i>	Widow Skimmer***	S5		
	<i>Plathemis lydia</i>	Common Whitetail***	S5		
Fishes	<i>Ambloplites rupestris</i>	Rock Bass***	S5		
	<i>Etheostoma flabellare</i>	Fantail Darter***#	S4		
	<i>Etheostoma nigrum</i>	Johnny darter^	S5		
	<i>Lepomis gibbosus</i>	Pumpkinseed^	S5		

Type	Scientific Name	Common Name	Provincial Rank	COSEWIC Status	COSSARO Status
	<i>Luxilus chrysocephalus</i>	Striped Shiner***#	S4	NAR	NAR
	<i>Neogobius melanostomus</i>	Round Goby***	SE		
	<i>Nocomis biguttatus</i>	Horneyhead chub^	S4	NAR	NAR
	<i>Pimephales notatus</i>	Bluntnose minnow^	S5	NAR	NAR
	<i>Rhinichthys obtusus</i>	Western Blacknose Dace^##	S5		
	<i>Rhinichthys cataractae</i>	Longnose dace^##	S5		
	<i>Salvelinus fontinalis</i>	Brook Trout^	S5		
	<i>Semotilus atromaculatus</i>	Creek Chub^	S5		
Mussels	<i>Alasmidonta marginata</i>	Elktoe***	S3		
	<i>Alasmidonta viridis</i>	Slippershell Mussel***	S3		
	<i>Anodontoides ferussacianus</i>	Cylindrical Papershell***	S4		
	<i>Elliptio dilatata</i>	Spike***	S5		
	<i>Lasmigona compressa</i>	Creek Heelsplitter***	S5		
	<i>Pyganodon grandis</i>	Giant Floater***	S5		
	<i>Strophitus undulatus</i>	Creepers***	S5		
Other Invertebrates	<i>Cicadellidae (Family)</i>	Leafhopper species			
	<i>Aquarius remigis</i>	Common Water Strider***			
	<i>Dissosteira carolina</i>	Carolina Grasshopper***	S4S5		
	<i>Faxonius rusticus</i>	Rusty Crayfish***	SE		
	<i>Ixodes scapularis</i>	Eastern Black-legged Tick***			
	<i>Rhagonycha fulva</i>	Common Red Soldier Beetle***	SE?		
Fungi	<i>Laetiporus sulphureus</i>	Chicken of the woods***			
	<i>Polyporus squamosus</i>	Dryad's Saddle***			

Information Sources:

* Natural Heritage GRCA, 2018

*** iNaturalist contributors, iNaturalist (2023). iNaturalist Research-grade Observations. iNaturalist.org. Occurrence dataset <https://doi.org/10.15468/ab3s5x> accessed via GBIF.org on 2023-03-08.

Fish species marked with # were captured in the Speed River adjacent to the Niska Lands.

Fish species marked with ## were captured in Hanlon Creek during a MNR survey at the creek's confluence with the Speed River in 1993.

Fish species marked with ^ were captured in Hanlon Creek during a GRCA/MNR survey in 2017.